

Business Intelligence

Advanced Telematics

Route Planning and Optimization



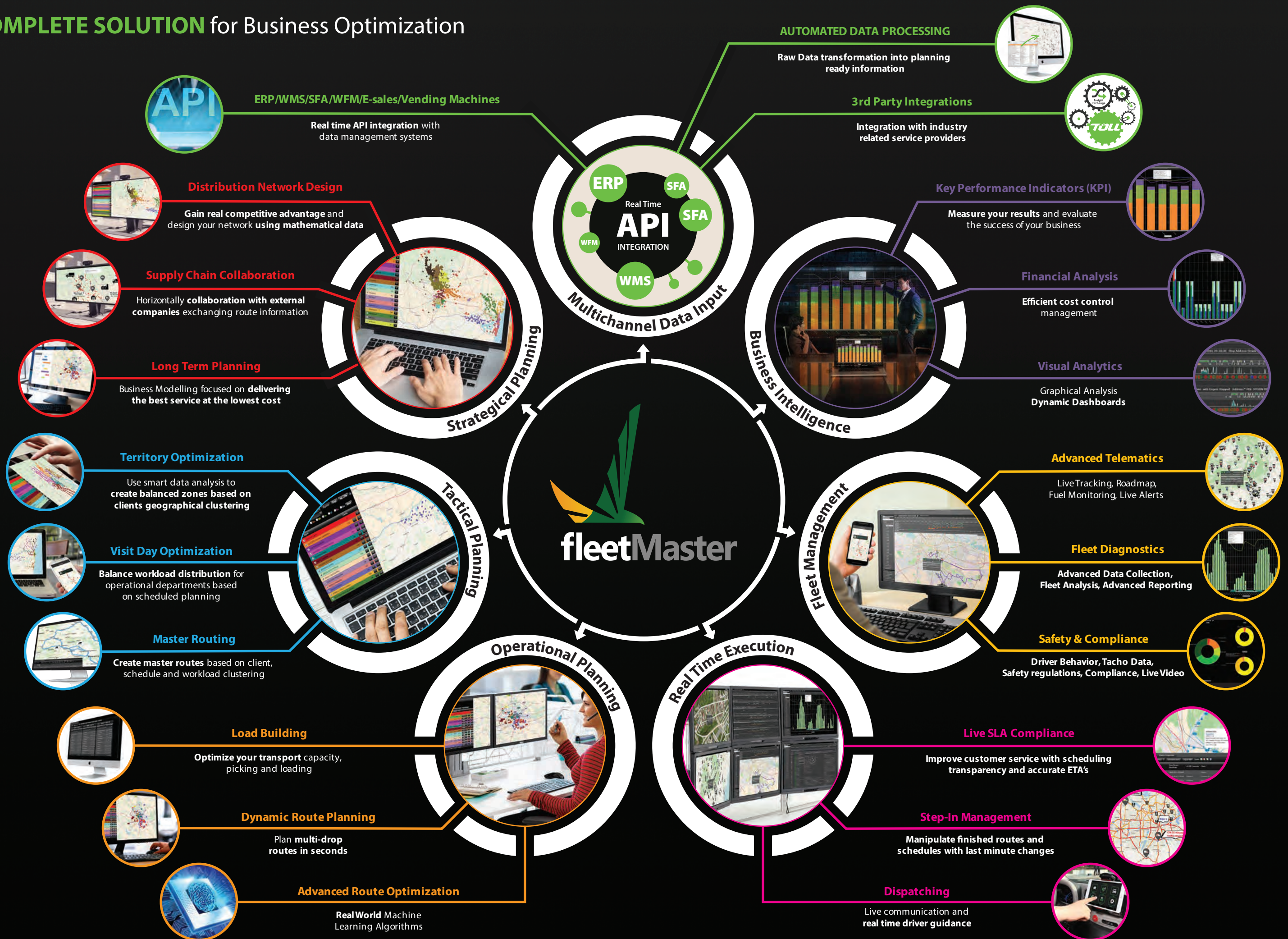
Optimize your
business with

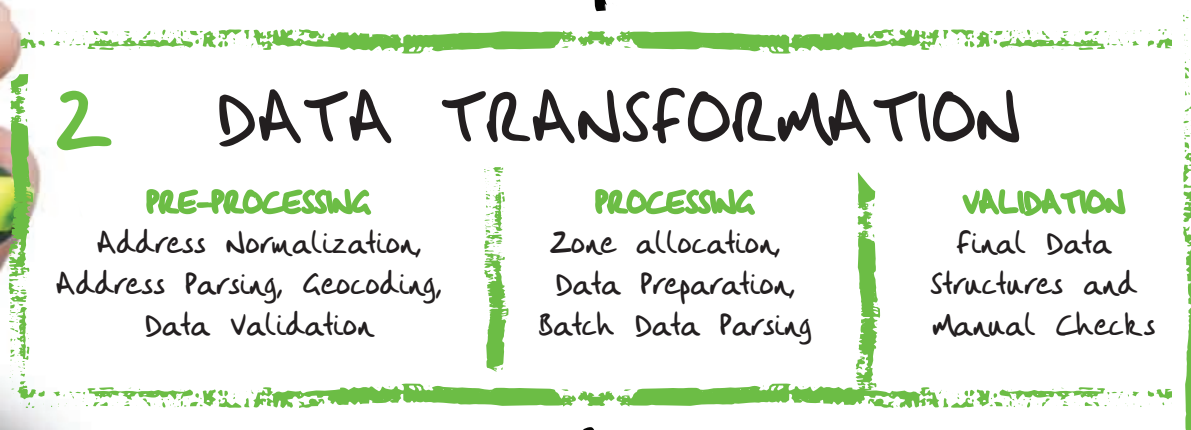
fleetMaster

COMPLETE SOLUTION
for Business Optimization

Combining TMS and FMS advanced features

COMPLETE SOLUTION for Business Optimization





...
FleetMaster™ integrates fast and easy with your existing data infrastructure and performs immediately without any additional costs

Multichannel Data Input

CONNECT AND COMMUNICATE FOR SEAMLESS INTEGRATION

ERP/WMS/SFA/WFM/ E-SALES/VENDING MACHINES

Real time API integration with data management systems

FleetMaster™ is a complete TMS (Transport Management System) and FMS (Fleet Management System) that acts as an interconnected part of your company's infrastructure and communicates with your ERP, SFA, WMS and other internal or unattended systems in order to ensure a complete data workflow.

We understand that any TMS or FMS is part of an entire data ecosystem and the added value comes from seamless integration between systems for data consolidation and enterprise class reporting.

AUTOMATED DATA PROCESSING

Raw Data transformation into planning ready information

Using state of the art data processing technology, like address normalization, batch geocoding and reverse geocoding, automated geographical zones allocation and other data transformation algorithms, **FleetMaster™** transforms collected raw data into planning ready information.

With **FleetMaster™** you do not need to invest and allocate resources to prepare your primary data: we take your data as it is and we do all the complicated jobs to transform it into smart information.

3RD PARTY INTEGRATIONS

Integration with industry related service providers

FleetMaster™ is part of an interconnected ecosystem of transportation service providers like Freight Exchanges, Toll Processors, Traffic Information Systems, etc., bringing into the planning and execution system real life data that increases your productivity.

We plan and control your route costs, we bring you available orders from the market and we create for you "what if scenarios" in order to obtain additional margins with 1 click activity!



Strategical Planning

MOBILIZE THE RIGHT RESOURCES
TO ACHIEVE YOUR GOALS

DISTRIBUTION NETWORK DESIGN

Gain real competitive advantage and design your network using mathematical data

In order to have an efficient distribution network, in terms of total logistic costs and service performance, **FleetMaster™** natively provides a framework for the strategic phase of the distribution networks design process.

FleetMaster™ is a high quality business tool, easy to use and applicable to actual cases, designed to be easy understandable for decision makers and easy to adopt by users and partners.

The visual planning gives you a full visibility over the distribution network and allows you to quickly identify the performance and the optimal resources usage.

The main goal of **FleetMaster™** distribution network module is to help you to visualize and design the most effective distribution network aiming for the lowest operational costs and the optimum delivery infrastructure!

SUPPLY CHAIN COLLABORATION

Vertical and horizontal collaboration with external companies exchanging route information

The latest trend in supply chain planning and control is to focus on collaboration downstream and that means information sharing.

With **FleetMaster™** we cover both sides of supply chain collaboration, vertical collaboration with suppliers and customers as well as horizontal collaboration with other organizations and competitors.

With focus on customer intimacy, product leadership and operational excellence, **FleetMaster™** aligns supply chain processes and planning, adds value to the customer, increases profitability and maintains business continuity.

FleetMaster™ is a joint performance-management system that easily handle data connections, process connection and people collaboration.

LONG TERM PLANNING

Business Modelling focused on delivering the best service at the lowest cost

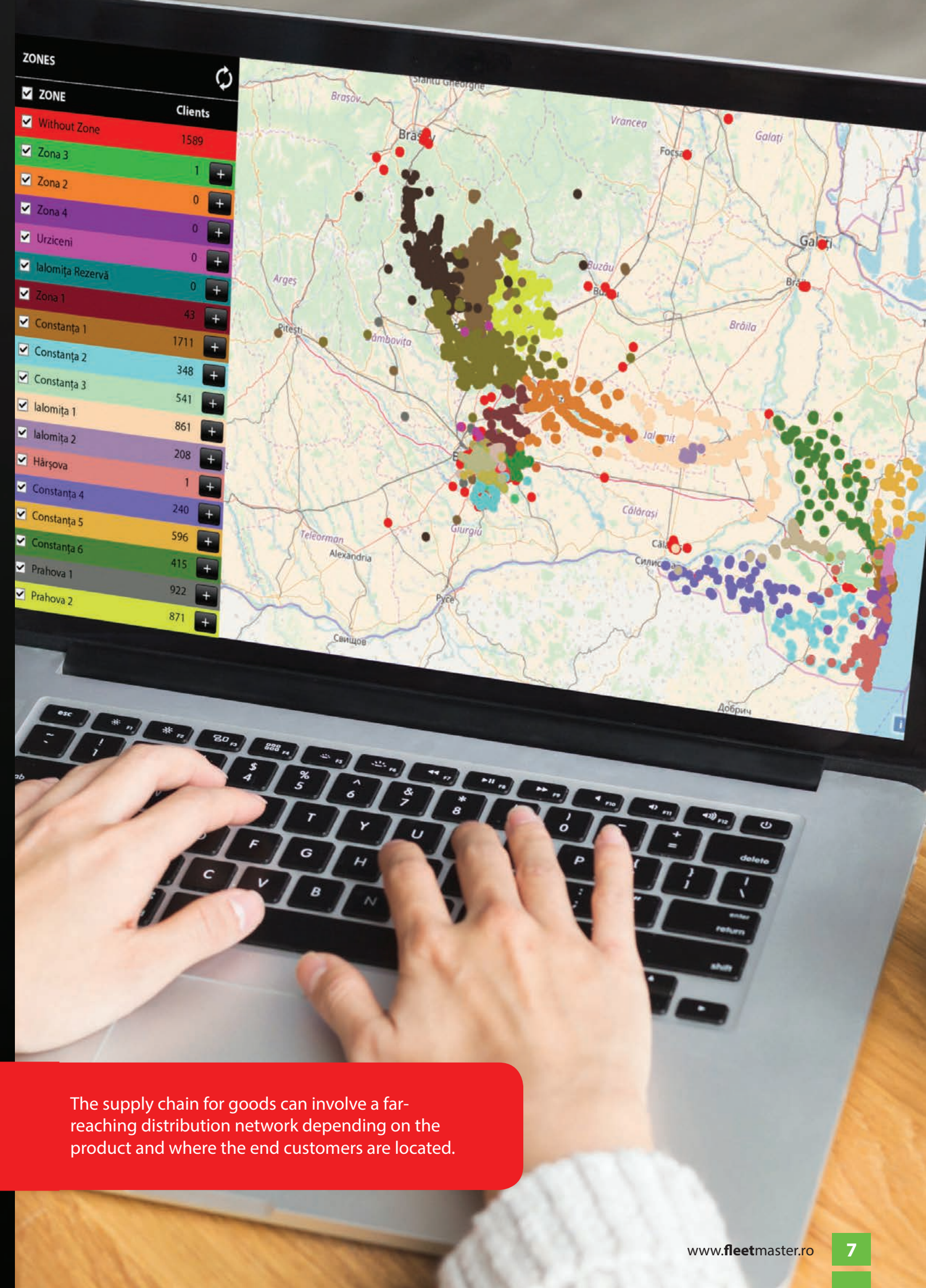
Strategical management operations are the key that enable companies to have a sustainable long term activity.

With **FleetMaster™** any company can maintain a competitive edge by adopting an innovative approach that solves complex business problems.

Once the strategy is set by the company's executive leadership, using **FleetMaster™** each lower management level can conduct long-term planning activities, can set priorities and can align resources with focused attention on common goals.



...
FleetMaster™ can deliver substantial benefits and advantages to all collaboration partners.



The supply chain for goods can involve a far-reaching distribution network depending on the product and where the end customers are located.



Tactical Planning

FOCUS ON “WHAT TO DO” AND ACHIEVE THE LONG TERM OBJECTIVES

TERRITORY OPTIMIZATION

Use smart data analysis to create balanced zones based on clients geographical clustering

We are aware that optimal territorial planning is done after a lot of hard work and many work forces involved.

FleetMaster™ helps you to make this action easy and logical, minimizing the number of resources used.

Using **FleetMaster™** visual territorial planning, you can easily understand the company's needs, you can deliver management information and reports and you can take optimal decisions for territory planning, reconfiguration and activity optimization.

VISIT DAY OPTIMIZATION

Balance workload distribution for operational departments based on scheduled planning

With **FleetMaster™** travel costs can be reduced by ensuring territories are geographically compact and the visit plans are covering the optimal areas.

The visual map clustering technology included in **FleetMaster™** can help you decide exactly what should be balanced: physical territory size, number of customers in the territory, number of customer visits, sales turnover or profit, workload and total sales.

Your customer satisfaction and sales revenue is increased due to proper management of your salesforce presence based on your customer's needs and preferences.

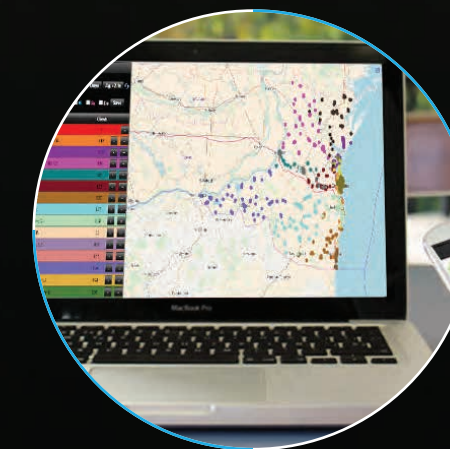
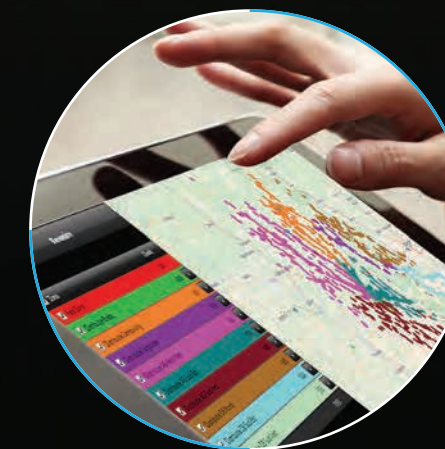
MASTER ROUTING

Create master routes based on client, schedule and workload clustering

Gain advantage of **FleetMaster™** Master Route Optimization module and schedule your routes based on frequencies, visit patterns as well as seasonal variation.

Using **FleetMaster™** you will have the ability to plan routes in a matter of seconds and forecast resources for depot to depot or depot to client static routes or forecast any potential routes based on time axis and available resources.

The fixed and the dynamic route planning are the key to an organized and profitable vehicle driven business.



Predict and prevent: accomplish your objectives by **taking the necessary actions easily and faster.**



FleetMaster™ helps you to balance your workload with just one click!

Operational Planning

IMPROVE BENEFITS WITH PLANNING
AND ROUTE OPTIMIZATION

LOAD BUILDING

Optimize your transport capacity,
picking and loading

FleetMaster™ load building is an integrated feature that helps you to optimize and organize order loading, picking and unloading, according to load capacity and volume of your trucks, maximizing the impact on workforce and environment.

We deliver optimized loading, picking and unloading sequences, organizing your warehouse personnel, loading slots and driver activity.



DYNAMIC ROUTE PLANNING

Plan multi-drop routes in seconds

FleetMaster™ is a flexible and powerful route planning solution that will help you optimize your transportation costs and provide better customer service by building and scheduling the most efficient routes.

We use both advanced mapping data as well as various business constraints and preferences and we deliver always the best results.

Dynamic Route Planning engine analyzes all your data, makes uncountable calculations, keeps count of every preference and business constraints, and delivers optimized routes that could never be calculated by human operators.



ADVANCED ROUTE OPTIMIZATION

Real World Machine Learning Algorithms

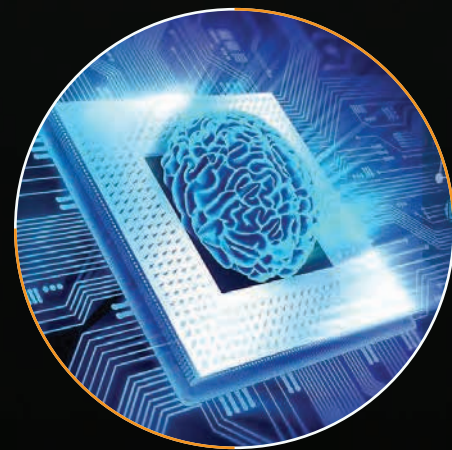
Route optimization is a complex task that can improve benefits with up to 40%.

FleetMaster™ is one of the most advanced route planning and optimization systems with proven results in many industries.

Using advanced mathematical algorithms, **FleetMaster™** makes billions of calculations and delivers the most accurate routes and ETA's.

We learn from the past, we adapt to the future and we use latest machine learning algorithms to provide best results every time.

This way, **FleetMaster™** helps your organization to grow in a safe and organized manner, being part of your success.



●●●
FleetMaster™ can improve
benefits up to 40%

We learn from the past, we adapt to the future and
we use latest machine learning algorithms to
provide best results every time.



Changing and monitoring planned routes and tasks can be challenging.

With **FleetMaster™** you can do all that in an organized and automated manner.



FleetMaster™ allows you to take the necessary actions in a matter of seconds. All this is possible using WHAT IF scenarios analysis based on live traffic data, real truck status or real customer availability

Real Time Execution

FULL CONTROL AND ABILITY TO DRIVE CHANGES ACROSS YOUR ACTIVITY

DISPATCHING

Live communication and real time driver guidance

From the scratch, **FleetMaster™** has been designed to work as a command and control center, linking the dispatchers and the drivers through live communication.

Using many simultaneous displays for dispatching and dashboard tablets or smartphones for the drivers, **FleetMaster™** keeps both dispatchers and drivers in permanent contact.

The driver receives routes, tasks, real time navigation guidance and statistic information about his activity and provides real time feedback to the dispatching center.

STEP-IN MANAGEMENT

Manipulate finished routes and schedules with last minute changes

Using real world data, **FleetMaster™** refines your planning parameters and creates more realistic route plans while **FleetMaster™** driver module enforces driver efficiency with live navigation guidance and task management.

With **FleetMaster™** you can take the necessary actions in a matter of seconds based on what if scenarios analysis using live traffic data, real truck status or real customer availability.

Changing things as they are happening, reroute and reschedule tasks are part of the daily activity and can be managed and controlled entirely through **FleetMaster™**.

LIVE SLA COMPLIANCE

Improve customer service with scheduling transparency and accurate ETA's

FleetMaster™ creates the needed transparency between your company and any partner, supplier or end user customer.

With **FleetMaster™** you can ensure first time delivery success by accommodating customer time window preferences and updating customers with accurate ETAs, based on planned ETAs and execution feedback.

By using advanced graphical synthesis of route completion and deviations, **FleetMaster™** is making SLA compliance an easy task.



FleetMaster™ helps you to increase customer satisfaction!

Fleet Management

ANALYZE YOUR BUSINESS AND KEEP OPERATIONAL COSTS UNDER CONTROL

SAFETY & COMPLIANCE

Driver Behavior, Tacho Data, Safety regulations, Compliance, Live Video

As safety regulations keeps a very strong trend in automotive industry, **FleetMaster™** helps you to keep an eye on your drivers and incidents.

We analyze driver behavior and classify your employees based on their driving style, we detect accidents, we download remotely the tachograph data, we monitor CO2 emissions and we even video monitor the road and the cabin.

Keeping your drivers safe is keeping you safe. Monitoring and coaching process cuts costs with fleet maintenance, insurance and business disruption.

All these features makes **FleetMaster™** a very valuable tool for your fleet management team.

FLEET DIAGNOSTICS

Advanced Data Collection, Fleet Analysis, Advanced Reporting

We know how important real-time insight into your vehicle performance can be when you're constantly on the go.

Using **FleetMaster™** FMS technology you have smart analysis for various data from GPS, CAN and other specific sensors (speed, torque, engine temperature, fuel level, acceleration, deceleration, panic button, RFID identification, etc..) as well as statistical data about consumption, trips, events, etc. with graphical drill-down display.

Using the automated reporting module **FleetMaster™** allows you to see what is happening with your fleet, without any interaction with the interface.

Just define what you want to see and **FleetMaster™** will keep you informed only about data that matters to you.

ADVANCED TELEMATICS

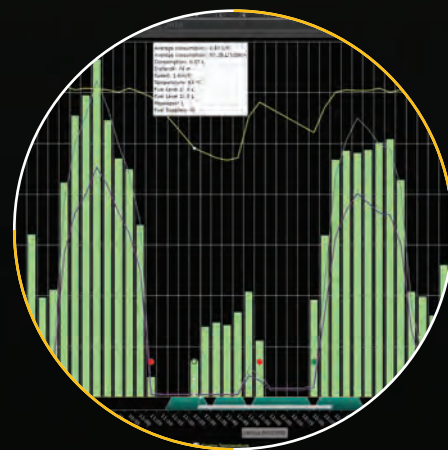
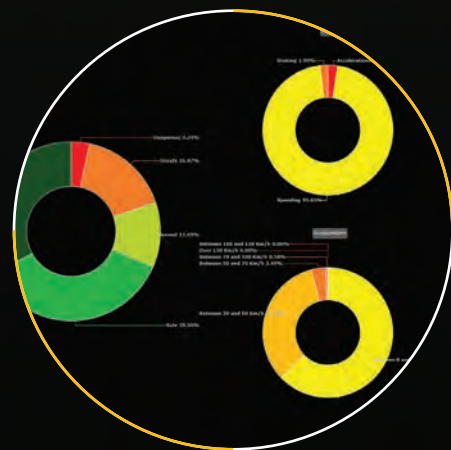
Live Tracking, Roadmap, Fuel Monitoring, Live Alerts

With **FleetMaster™** you have both centralized and detailed position reporting, making your job easier and more productive.

Using our 2D and 3D maps as well as accurate tracking results you gain the unique ability to see a visual and interactive display of vehicle activity.

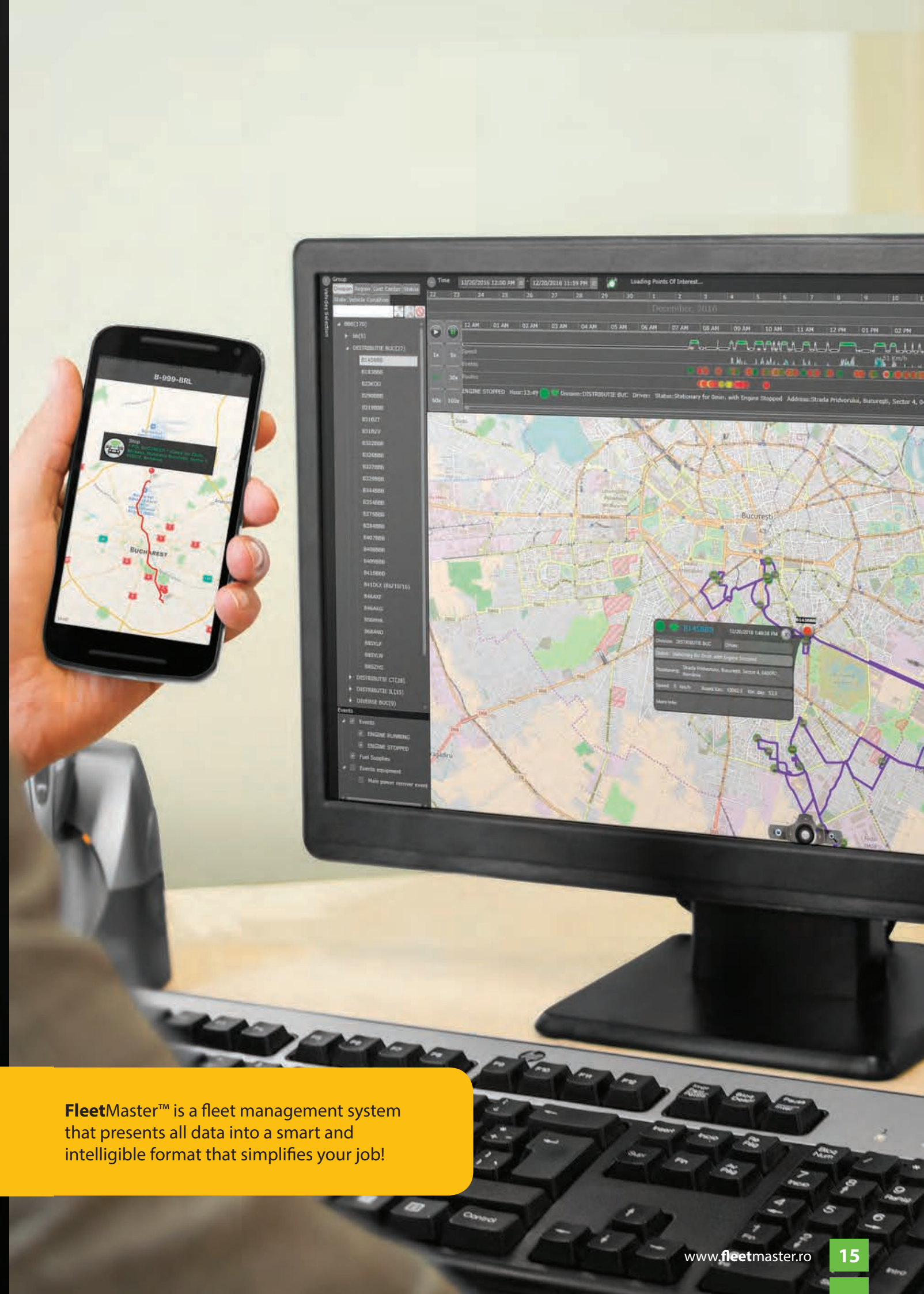
Both map and timeline activity are presented with complete details over roadmaps, speed charts, geo fences, events, alerts, idling, etc.

All activities from simple positioning to fuel monitoring analysis are simple and fully automated through reports and alerts, available both on web interface and mobile interface.



With **FleetMaster™** you acquire full control over the entire fleet!

FleetMaster™ is a fleet management system that presents all data into a smart and intelligible format that simplifies your job!





FleetMaster™ provides historical, current and predictive views of business operations.

Business Intelligence

MEASURE YOUR RESULTS AND EVALUATE THE SUCCESS OF YOUR BUSINESS

VISUAL ANALYTICS

Graphical Analysis Dynamic Dashboards

It's a fact that the bigger the fleet is, the most difficult is to analyze all day activities and results into standard report sheets.

With **FleetMaster™** you have a complete graphical activity overview, with dashboards, timeline views, charts and drill-down visual details, with multiple filtering and grouping criteria.

In fact **FleetMaster™** is a complete Business Intelligence tool that helps to conduct analysis, identify trends and take the right business decisions.

FINANCIAL ANALYSIS

Efficient cost control management

No matter how many types of costs you have, how many cost centers or how many vehicles, **FleetMaster™** manages all fleet related data and brings out state of the art cost control analysis that gives you full visibility and control over your fleet expenses.

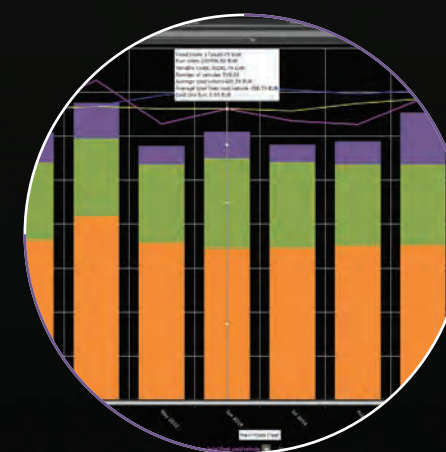
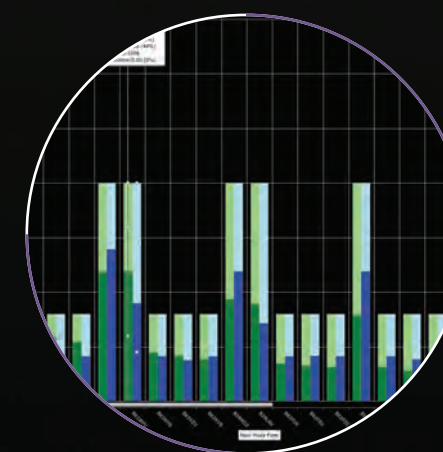
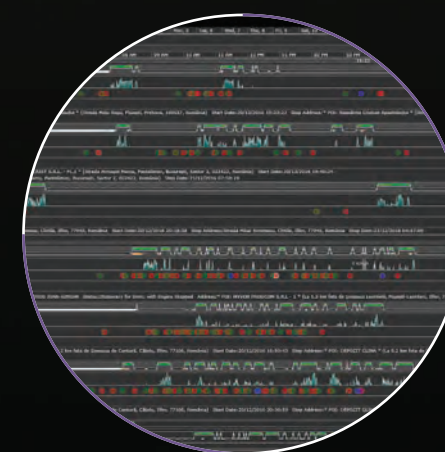
With **FleetMaster™** you can set your budget and follow your KPI's evolution with simple and efficient cost control tool, inside your fleet management tool.

KEY PERFORMANCE INDICATORS (KPI)

Measure your results and evaluate the success of your business

FleetMaster™ is a business oriented software, and once configured it can provide powerful KPI analysis like how many deliveries were late versus on time last week, month or year, how much excess mileage was incurred during a chosen time period, what is the cost per distance unit or what is the cost per weight unit.

FleetMaster™ natively builds reports based on your business objectives and KPI's and delivers up to 3 years of comparative analysis so you can take the right decision for your business.



Analyze, identify trends and Optimize Your Business with **FleetMaster™**!

FleetMaster™ is a complete Solution for Business Optimization that combines **TMS** (Transport Management Solution) and **FMS** (Fleet Management Solution) advanced features such as **Route Planning**, **Route Optimization**, **Advanced Telematics** and **Business Intelligence**.



fleetMaster

Briliant Technologies S.A.

40 Louis Pasteur Street, 050536

5th District – Bucharest, Romania

Tel.: +40 21 636 36 08

Email: contact@fleetmaster.ro

www.fleetmaster.ro